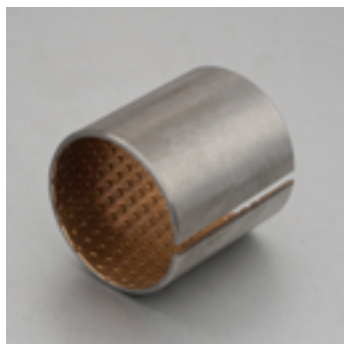


DK-800

轴套 Cylindrical bushes (内径I.D 6 ~ 45)

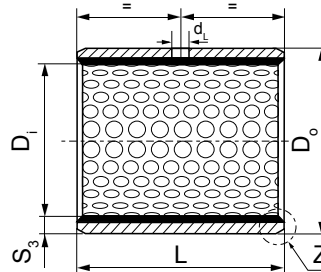
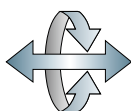


请从适用的内径、外径、长度中选择零件号
(例)内径60mm、长度50mm的情况下

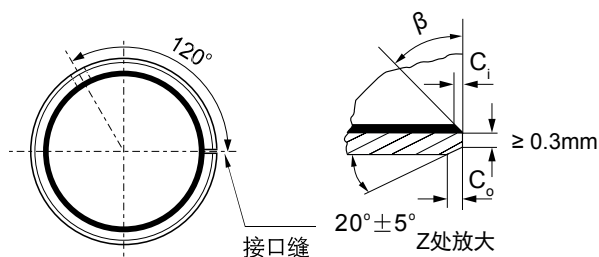
DK-800 - 1015

请指定上述零件号

运动方向



内径 D _i φd	外径 D _o φD	轴径 (h8) D _s	座孔 (H7) D _H	压装后 内孔公差 D _{i,a}	配合间隙	壁厚 S ₃	油孔 d _L	长度L ⁰ _{-0.40}							
								10	15	20	25	30	40	50	
10	12	10 _{-0.022}	12 ^{+0.018}	+0.148 +0.010	0.170 0.010	0.995 0.935	4	1010	1015	1020					
12	14	12 _{-0.027}	14 ^{+0.018}	"	0.175 0.010	"	"	1210	1215	1220					
14	16	14 _{-0.027}	16 ^{+0.018}	"	"	"	"	1410	1415	1420					
15	17	15 _{-0.027}	17 ^{+0.018}	"	"	"	"	1510	1515	1520					
16	18	16 _{-0.027}	18 ^{+0.018}	"	"	"	"	1610	1615	1620					
18	20	18 _{-0.027}	20 ^{+0.021}	+0.151 +0.010	0.178 0.010	"	"	1810	1815	1820	1825				
20	23	20 _{-0.033}	23 ^{+0.021}	+0.161 +0.020	0.194 0.020	1.490 1.430	"	2010	2015	2020	2025				
22	25	22 _{-0.033}	25 ^{+0.021}	"	"	"	6	2210	2215	2220	2225				
24	27	24 _{-0.033}	27 ^{+0.021}	"	"	"	"	2410	2415	2420	2425	2430			
25	28	25 _{-0.033}	28 ^{+0.021}	"	"	"	"		2515	2520	2525	2530			
26	30	26 _{-0.033}	30 ^{+0.021}	+0.181 +0.040	0.214 0.040	1.980 1.920	"		2615	2620	2625	2630			
28	32	28 _{-0.033}	32 ^{+0.025}	+0.185 +0.040	0.218 0.040	"	"		2815	2820	2825	2830	2840		
30	34	30 _{-0.033}	34 ^{+0.025}	"	"	"	"		3015	3020	3025	3030	3040		
32	36	32 _{-0.039}	36 ^{+0.025}	"	0.224 0.040	"	"		3215	3220	3225	3230	3240		
35	39	35 _{-0.039}	39 ^{+0.025}	"	"	"	"			3520	3525	3530	3540	3550	
38	42	38 _{-0.039}	42 ^{+0.025}	"	"	"	8			3820	3825	3830	3840	3850	
40	44	40 _{-0.039}	44 ^{+0.025}	"	"	"	"			4020	4025	4030	4040	4050	



内外倒角

S ₃	C ₀	C ₁	β
0.75	0.5 ± 0.3	0.25 ± 0.2	35° ± 5°
1.00	0.6 ± 0.3	0.30 ± 0.2	35° ± 5°
1.50	0.7 ± 0.3	0.50 ± 0.3	35° ± 5°

S ₃	C ₀	C ₁	β
2.00	1.2 ± 0.4	0.50 ± 0.3	35° ± 5°
2.50	1.8 ± 0.6	0.60 ± 0.3	45° ± 5°

内径 D _i φd	外径 D _o φD	轴径 (h8) D _s	座孔 (H7) D _H	压装后 内孔公差 D _{i,a}	配合间隙	壁厚 S ₃	油孔 d _L	长度L ⁰ _{-0.40}							
								25	30	40	50	60	80	90	100
45	50	45 _{-0.039}	50 ^{+0.025}	+0.225 +0.080	0.264 0.080	2.460 2.400	8	4525	4530	4540	4550				
50	55	50 _{-0.039}	55 ^{+0.030}	+0.230 +0.080	0.269 0.080				5030	5040	5050	5060			
55	60	55 _{-0.046}	60 ^{+0.030}		0.276 0.080				5530	5540	5550	5560			
60	65	60 _{-0.046}	65 ^{+0.030}						6030	6040	6050	6060			
65	70	65 _{-0.046}	70 ^{+0.030}						6530	6540	6550	6560			
70	75	70 _{-0.046}	75 ^{+0.030}						7030	7040	7050	7060	7080		
75	80	75 _{-0.046}	80 ^{+0.030}				9.5		7530	7540	7550	7560			
80	85	80 _{-0.046}	85 ^{+0.035}	+0.235 +0.080	0.281 0.080					8040	8050	8060	8080		
85	90	85 _{-0.054}	90 ^{+0.035}		0.289 0.080				8530		8550	8560	8580		85100
90	95	90 _{-0.054}	95 ^{+0.035}								9050	9060	9080		90100
95	100	95 _{-0.054}	100 ^{+0.035}									9560	9580	9590	95100
100	105	100 _{-0.054}	105 ^{+0.035}									10060	10080	10090	100100
105	110	105 _{-0.054}	110 ^{+0.035}									10560	10580		105100
110	115	110 _{-0.054}	115 ^{+0.035}									11060	11080		110100
115	120	115 _{-0.054}	120 ^{+0.035}									11550		11580	
120	125	120 _{-0.054}	125 ^{+0.040}	+0.240 +0.080							12050	12030			120100
125	130	125 _{-0.063}	130 ^{+0.040}		0.303 0.080										125100
130	135	130 _{-0.063}	135 ^{+0.040}									13060			130100
135	140	135 _{-0.063}	140 ^{+0.040}									13560	13580		
140	145	140 _{-0.063}	145 ^{+0.040}									14060	14080		140100
150	155	150 _{-0.063}	155 ^{+0.040}									15060	15080		150100